

103415-099

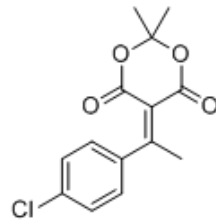


— 171.740
— 160.959
— 160.173

— 140.032
— 135.576
— 128.847
— 127.383
— 117.196

— 104.010

— 27.413
— 26.295



Current Data Parameters
NAME 103415-099
EXPNO 1
PROCNO 1

F2 - Acquisition Parameters
Date_ 20150219
Time 10.32
INSTRUM spect
PROBHD 5 mm PABBO BB-
PULPROG zgpg
TD 262144
SOLVENT CDC13
NS 256
DS 0
SWH 31250.000 Hz
FIDRES 0.119209 Hz
AQ 4.1943040 sec
RG 2050
DW 16.000 usec
DE 6.50 usec
TE 299.0 K
D1 1.0000000 sec
d11 0.0300000 sec
DELTA 0.89999998 sec
TD0 1
SF01 125.7698617 MHz
NUC1 13C
P1 9.75 usec
PLW1 -1.0000000 W
SFO2 500.1325007 MHz
NUC2 1H
CPDPRG[2] waltz16
PCPD2 80.00 usec
PLW2 -1.0000000 W
PLW12 -1.0000000 W
PLW13 -1.0000000 W

F2 - Processing parameters
SI 131072
SF 125.7577890 MHz
WDW EM
SSB 0
LB 0.30 Hz
GB 0
PC 1.40

